

MODERN STAINLESS POOL TABLE INSTRUCTIONS

MODEL: BLP-AFD001

1. The entire top of the modern stainless pool table is one piece and does not require assembly. This is an extremely heavy piece and needs to be handled carefully. Team lifting is necessary
2. Assembly will require wrench and Phillips's head screwdriver, 2 sawhorses or similar to support the top of the table while installing legs
3. Open Accessory Box and Crate. Be careful when opening that you do not cut or damage the interior contents.
4. Identify the pieces in the container. You will receive
1-pool tabletop, 2 leg bases, 8 bolts to attach legs to tabletop, 8 pool pockets, 4 feet, 4 threaded bolts, 4 nuts, 12 screws.
5. Identify the pool table feet and attach threaded bolt and nut as shown in photo.



6. Attach Feet to pool table base by screwing them in at the base as shown. Each foot is a built-in leveler that can be adjusted to ensure the levelness of the pool table.



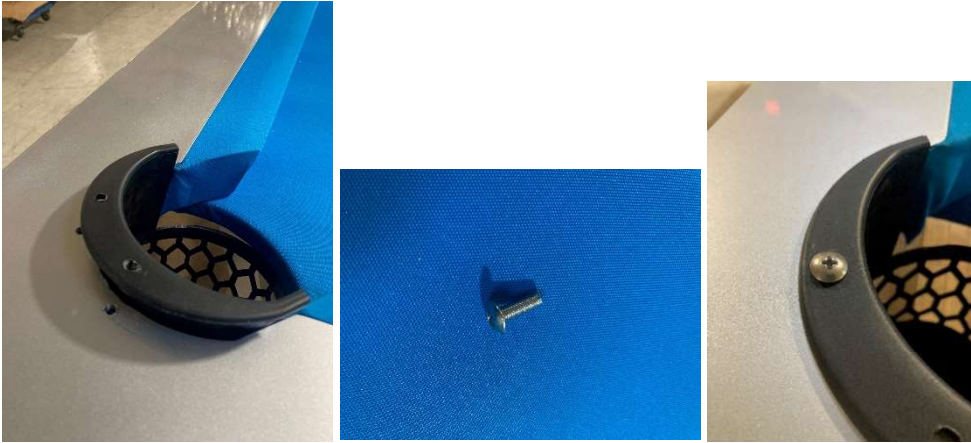
7. Carefully position the table top on to sawhorse or similar space approximately 2-3 feet apart in the center of the table. Place the table over these supports. This will suspend the table while you work on attaching the feet. Do not attach the feet while the pool table is on its side.
8. Position the 2 bases under the table centered with the holes for the bolts to be installed.



9. Tighten bolts using wrench.

MODERN STAINLESS POOL TABLE INSTRUCTIONS
MODEL: BLP-AFD001

10. Insert Pool Table Pockets. The pool table pockets slide into the slots and are secured using screws as shown in the photos below.



11. Installation Complete

